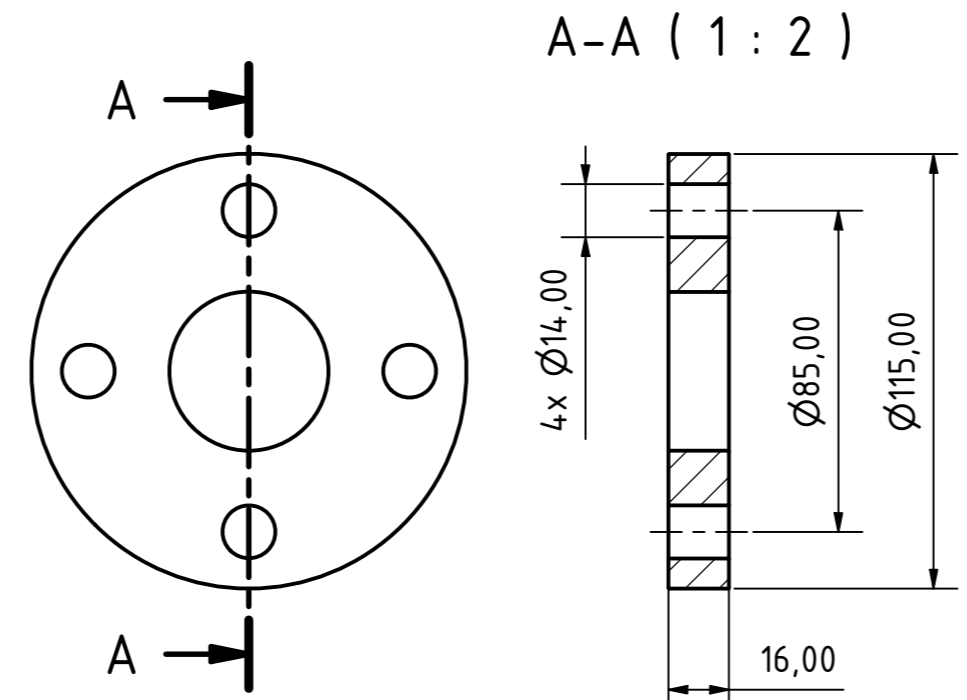


DIMENSIONS
in mm
* may change with different motor manufacturer

DRIVE
Explosion proof (II2G Ex db eb) TEFC three phase asynchronous squirrel cage electric motor
acc. to IEC Standards
Manufacturer: HEW
Size: IEC90 B5, 1,5kW, 1450 rpm
Size: IEC90 B5, 1,1kW, 950 rpm
Size: IEC90 B5, 0,55kW, 750 rpm

PROCESS NOSSLES
Lap Joint Flanges DN25 PN16
Flange Bushes threaded G1"



Alle Angaben unverbindlich, technische Änderungen vorbehalten! Technical data not binding and subject to change!
Copyright MARCH PUMPEN GmbH & Co.KG 2022

		MARCH PUMPEN GmbH Rätthausstraße 2 D-35394 Gießen Tel.: (+49) (0)641-686806-0 Fax.: (+49) (0)641-686806-60				1:2		Pump weight: 65kg	
		Datum 15.08.2022		Name Lach		VANE-MAG MPA III.2° Range SSF - IEC90 - HEW - PT100			
		Gezeichnet 15.08.2022		Kontrolliert Norm		DPMPA-1014.2-2414.2		1 A2	
Status	Änderungen	Datum	Name						